

PALM BEACH
GASTROENTEROLOGY
CONSULTANTS, LLC

KRISHNA TRIPURANENI, MD
THOMAS J. FLANNERY, MD
MARIA T. VALDES, MD

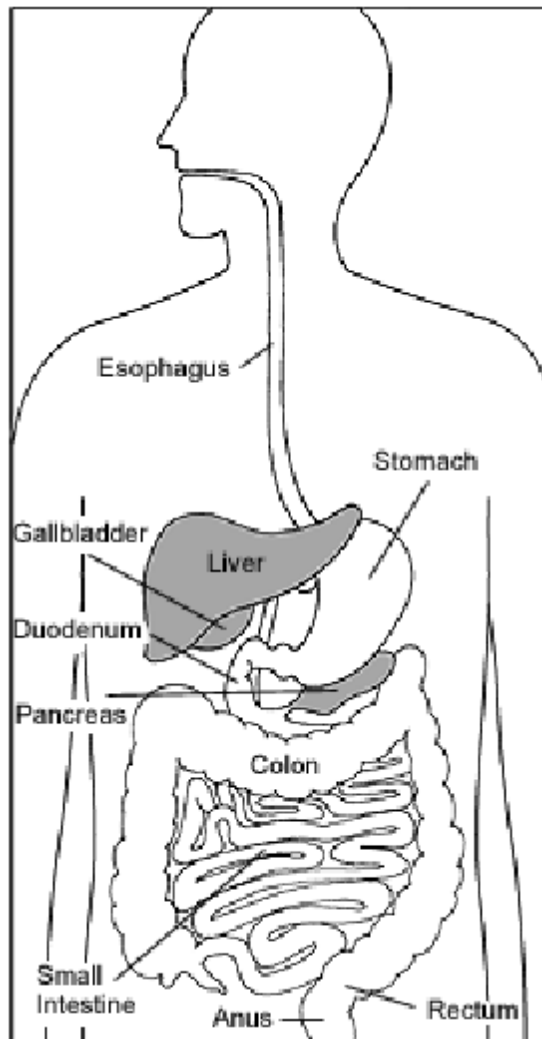
ERCP
(Endoscopic Retrograde
Cholangiopancreatography)

1157 South State Road 7
Wellington, FL 33414
Phone: (561) 795-3330
Fax: (561) 795-1030

1200 South Main Street, Suite 102
Belle Glade, FL 33430
Phone (561) 996-5600
Fax: (561) 992-0928

www.gitrip.com

Endoscopic retrograde cholangiopancreatography (en-doh-SKAH-pik REH-troh-grayd koh-LAN-jee-oh-PANG-kree-uh-TAH-gruh-fee) (ERCP) enables the physician to diagnose problems in the liver, gallbladder, bile ducts, and pancreas. The liver is a large organ that, among other things, makes a liquid called bile



that helps with digestion. The gallbladder is a small, pear-shaped organ that stores bile until it is needed for digestion. The bile ducts are tubes that carry bile from the liver to the gallbladder and small intestine. These ducts are sometimes called the biliary tree. The pancreas is a large gland that produces chemicals that help with digestion and hormones such as insulin.

ERCP is used primarily to diagnose and treat conditions of the bile ducts, including gallstones, inflammatory strictures (scars), leaks (from trauma and surgery), and cancer. ERCP combines the use of x-rays and an endoscope, which is a long, flexible, lighted tube. Through the endoscope, the physician can see the inside of the stomach and duodenum, and inject dyes into the ducts in the biliary tree and pancreas so they can be seen on x-rays. For the procedure, you will lie flat on your stomach on an examining table in a x-ray room. You will be given a sedative to help you relax during the exam. You will swallow the endoscope, and the physician will then guide the scope through your esophagus, stomach, and duodenum until it reaches

the spot where the ducts of the biliary tree and pancreas open into the duodenum. The physician then will pass a small plastic tube through the scope. Through the tube, the physician will inject a dye into the ducts to make them show up clearly on x-rays. X rays are taken as soon as the dye is injected. If the exam shows a gallstone or narrowing of the ducts, the physician can insert instruments into the scope to remove or relieve the obstruction. Also, tissue samples (biopsy) can be taken for further testing. Possible complications of ERCP include pancreatitis (inflammation of the pancreas), infection, bleeding, and perforation of the duodenum. Except for pancreatitis, such problems are uncommon. You may have tenderness or a lump where the sedative was injected, but that should go away in a few days. ERCP takes 30 minutes to 2 hours. You may have some discomfort when the physician blows air into the duodenum and injects the dye into the ducts. However, the pain medicine and sedative should keep you from feeling too much discomfort. After the procedure, you will need to stay at the

surgery center for 1 to 2 hours until the sedative wears off. The physician will make sure you do not have signs of complications before you leave.

Preparation

- **Few days** before, you must arrange for someone to take you home the day of the procedure—you will not be allowed to drive because of the sedatives.
- **One Night** before, do not eat or drink anything after midnight.
- **Day of procedure**, (if applicable) blood pressure and/or heart medication can be taken with a sip of water.